

Interviewing: September 4-7, 2010  
Sample: 1000 Adults nationwide online  
701 registered voters nationwide online



806 D Street, SE  
Washington, DC 20003

Contact:  
Thomas Riehle  
Ph: (202) 544-2550

# *The Economist/YouGov* Poll

## 2010 Weekly Tracking

For immediate release

**1. Approval of Obama as President – Historical**

Do you approve or disapprove of the way Barack Obama is handling his job as President?

All Adults							
	<b>Total Approve</b>	<b>Total Disapprove</b>	Strongly Approve	Somewhat Approve	Somewhat Disapprove	Strongly Disapprove	Not Sure
September 4-7, 2010	43%	49%	17%	26%	12%	37%	8%
August 28-31, 2010	42%	51%	16%	26%	15%	36%	7%
August 21-24, 2010	42%	52%	17%	25%	15%	37%	6%
August 14-17, 2010	43%	52%	15%	28%	15%	37%	6%
August 7-10, 2010	45%	48%	20%	25%	12%	36%	7%
July 31-August 3, 2010	45%	48%	19%	26%	13%	35%	8%
July 24-27, 2010	44%	50%	16%	28%	12%	38%	6%
July 17-20, 2010	45%	48%	19%	26%	14%	34%	8%
July 10-13, 2010	48%	45%	18%	30%	13%	32%	7%
July 3-6, 2010	43%	52%	18%	25%	16%	36%	6%
One Year Ago	48%	45%	23%	25%	16%	29%	8%

Registered Voters							
	<b>Total Approve</b>	<b>Total Disapprove</b>	Strongly Approve	Somewhat Approve	Somewhat Disapprove	Strongly Disapprove	Not Sure
September 4-7, 2010	45%	53%	20%	25%	12%	41%	3%
August 28-31, 2010	43%	53%	19%	24%	12%	41%	4%
August 21-24, 2010	43%	54%	19%	24%	13%	41%	4%
August 14-17, 2010	43%	55%	18%	25%	12%	43%	3%
August 7-10, 2010	46%	50%	22%	24%	9%	41%	4%
July 31-August 3, 2010	45%	51%	19%	26%	11%	40%	4%
July 24-27, 2010	46%	51%	19%	27%	10%	41%	3%
July 17-20, 2010	47%	49%	23%	24%	11%	38%	3%
July 10-13, 2010	49%	48%	21%	28%	11%	37%	3%
July 3-6, 2010	44%	54%	21%	23%	14%	40%	2%
One Year Ago	50%	46%	26%	24%	14%	32%	4%

## Obama Approval

"Do you approve or disapprove of the way Barack Obama is handling his job as President?"

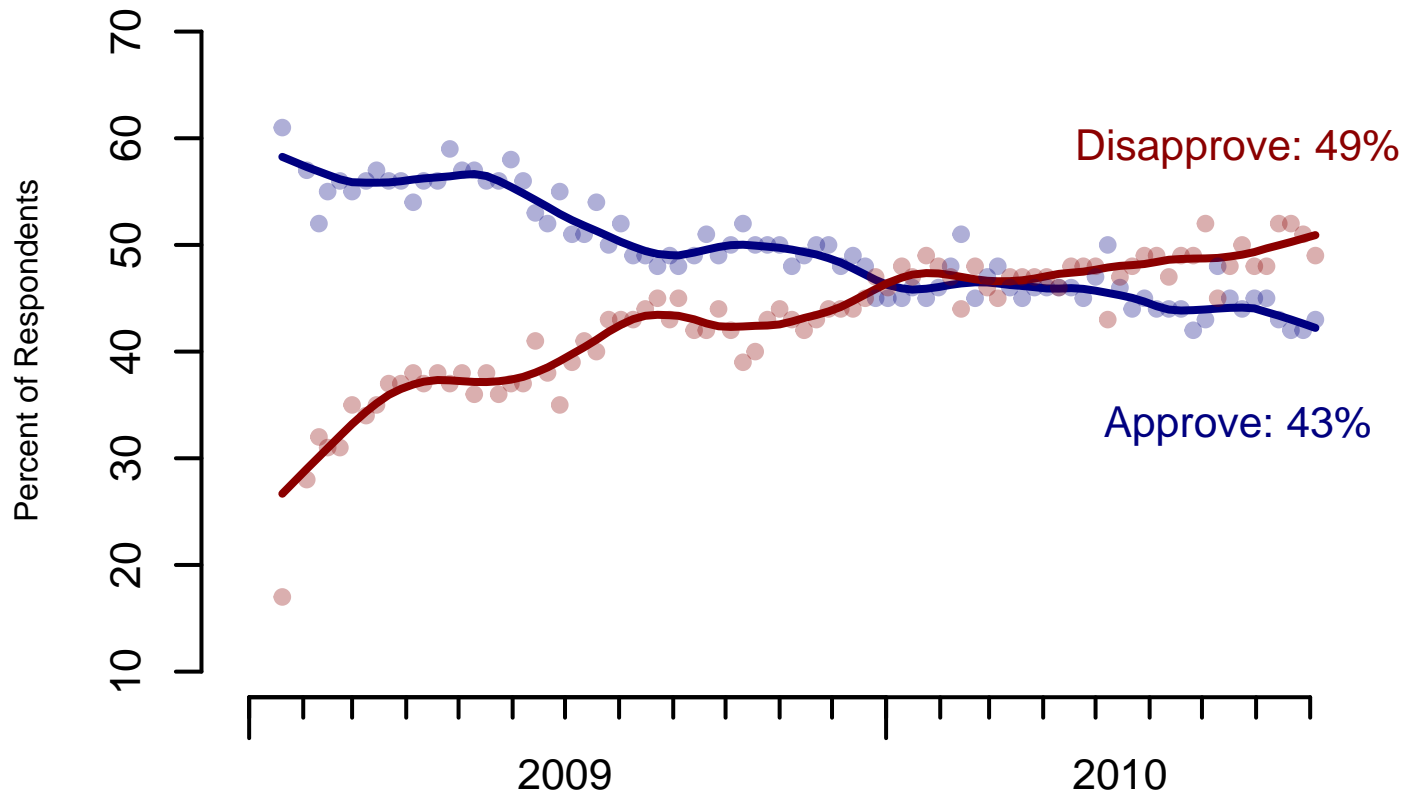


Figure 1: Obama Approval – All Adults

## Obama Approval

"Do you approve or disapprove of the way  
Barack Obama is handling his job as President?"

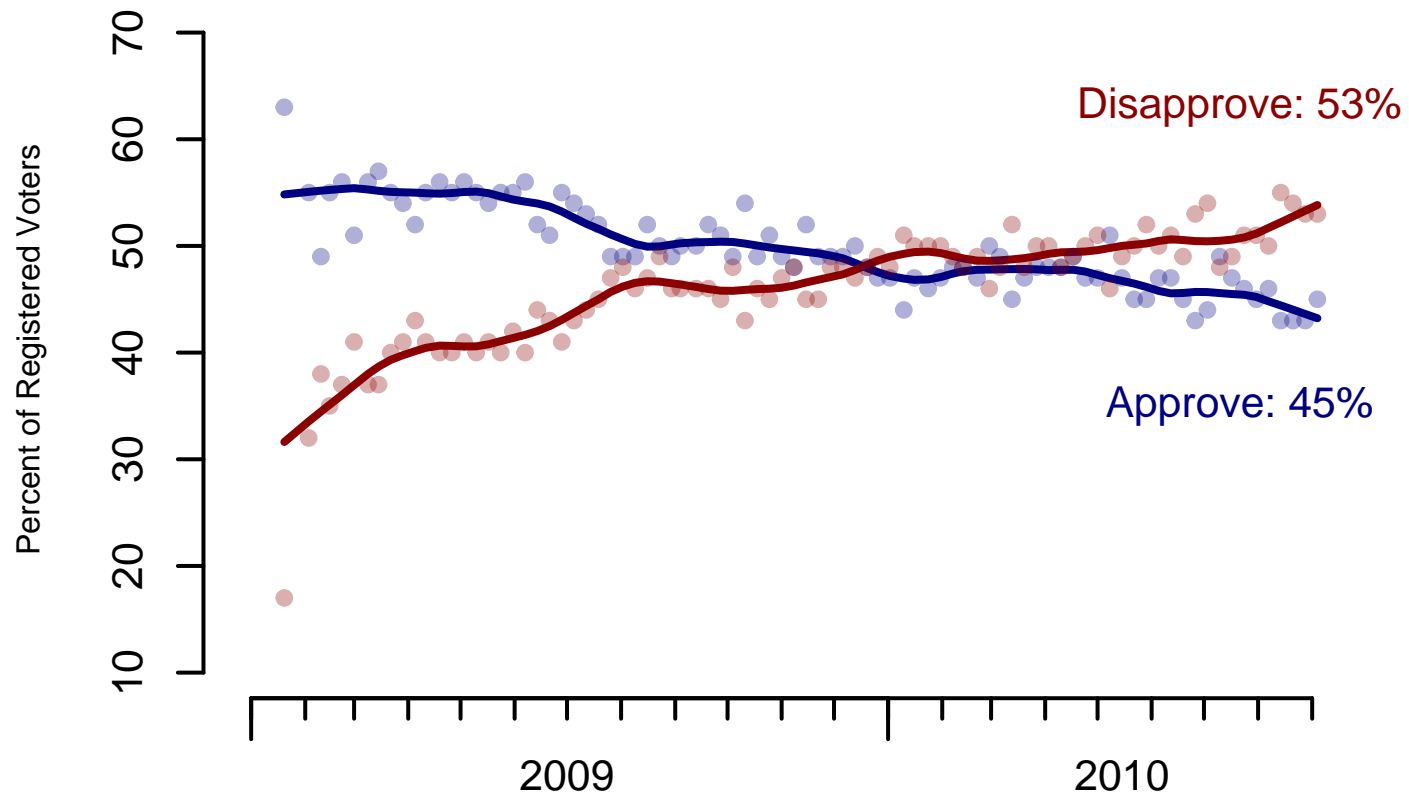


Figure 2: Obama Approval – Registered Voters

**2. Approval of Obama as President – This Week**

Do you approve or disapprove of the way Barack Obama is handling his job as President?

	Total	Age			Race			Gender		Education		
		18-29	30-64	65+	White	Black	Hispanic	Male	Female	HS or Less	Some College	College Grad
Strongly approve	17.3%	14.8%	19.2%	14.6%	14.0%	41.3%	18.2%	14.0%	20.4%	12.5%	19.1%	23.1%
Somewhat approve	26.0%	33.7%	25.6%	16.5%	24.8%	33.2%	28.8%	23.9%	28.0%	21.2%	30.2%	29.2%
Somewhat disapprove	11.8%	14.2%	11.1%	10.3%	12.3%	10.0%	9.2%	10.0%	13.5%	13.3%	11.1%	10.2%
Strongly disapprove	37.3%	22.1%	39.0%	53.7%	41.7%	6.2%	36.0%	45.3%	29.8%	38.9%	36.1%	36.0%
Not sure	7.6%	15.1%	5.1%	4.8%	7.3%	9.3%	7.8%	6.8%	8.3%	14.1%	3.5%	1.6%
Totals (Unweighted)	100.0% (1,000)	100.0% ( 215)	100.0% ( 652)	100.0% ( 133)	100.0% ( 729)	100.0% ( 103)	100.0% ( 168)	100.0% ( 479)	100.0% ( 521)	100.0% ( 399)	100.0% ( 350)	100.0% ( 251)

	Total	Party ID			Ideology			Region				Family Income		
		Dem	Rep	Ind	Lib	Mod	Con	Northeast	Midwest	South	West	Under 40	40-100	100+
Strongly approve	17.3%	38.3%	2.5%	11.5%	37.9%	22.9%	4.2%	12.2%	16.3%	16.5%	24.6%	18.3%	18.6%	16.2%
Somewhat approve	26.0%	44.0%	4.2%	26.2%	48.7%	33.9%	4.9%	28.6%	26.9%	24.8%	25.0%	23.6%	30.0%	28.3%
Somewhat disapprove	11.8%	9.5%	12.8%	14.9%	9.0%	15.8%	8.0%	17.9%	11.0%	10.6%	9.0%	13.6%	12.7%	7.1%
Strongly disapprove	37.3%	5.0%	79.7%	39.5%	2.1%	23.5%	81.4%	31.9%	35.2%	42.3%	35.9%	32.6%	35.6%	45.8%
Not sure	7.6%	3.2%	0.9%	7.9%	2.2%	3.9%	1.6%	9.5%	10.7%	5.9%	5.5%	11.9%	3.1%	2.7%
Totals (Unweighted)	100.0% (1,000)	100.0% ( 368)	100.0% ( 254)	100.0% ( 283)	100.0% ( 218)	100.0% ( 341)	100.0% ( 331)	100.0% ( 188)	100.0% ( 216)	100.0% ( 365)	100.0% ( 231)	100.0% ( 364)	100.0% ( 371)	100.0% ( 152)

	Total	Voter Registration		2008 Vote			Obama Approval		2010 Congressional Vote	
		Registered	Not registered	Obama	McCain	Other	Approve	Disapprove	Dem/Lean Dem	Rep/Lean Rep
Strongly approve	17.3%	20.1%	10.9%	37.5%	0.5%	0.0%	39.9%	0.0%	37.7%	1.0%

continued on the next page ...

	continued from previous page									
	Voter Registration		2008 Vote			Obama Approval		2010 Congressional Vote		
	Total	Registered	Not registered	Obama	McCain	Other	Approve	Disapprove	Dem/Lean Dem	Rep/Lean Rep
Somewhat approve	26.0%	24.8%	28.9%	43.4%	1.8%	14.6%	60.1%	0.0%	44.5%	6.3%
Somewhat disapprove	11.8%	11.6%	12.1%	9.3%	10.8%	26.4%	0.0%	24.0%	8.9%	11.6%
Strongly disapprove	37.3%	40.9%	28.9%	6.0%	85.7%	56.0%	0.0%	76.0%	4.6%	79.8%
Not sure	7.6%	2.6%	19.1%	3.8%	1.3%	3.0%	0.0%	0.0%	4.3%	1.3%
Totals (Unweighted)	100.0% (1,000)	100.0% ( 728)	100.0% ( 272)	100.0% ( 428)	100.0% ( 328)	100.0% ( 37)	100.0% ( 449)	100.0% ( 501)	100.0% ( 458)	100.0% ( 406)

**3. Approval of U.S. Congress – Historical**

Overall, do you approve or disapprove of the way that the United States Congress is handling its job?

All Adults

	<b>Total Approve</b>	<b>Total Disapprove</b>	Strongly Approve	Somewhat Approve	Neutral	Somewhat Disapprove	Strongly Disapprove	Not Sure
September 4-7, 2010	15%	66%	2%	13%	10%	22%	44%	9%
August 28-31, 2010	12%	65%	2%	10%	14%	23%	42%	9%
August 21-24, 2010	13%	66%	2%	11%	13%	22%	44%	8%
August 14-17, 2010	11%	68%	2%	9%	14%	23%	45%	7%
August 7-10, 2010	12%	64%	2%	10%	17%	19%	45%	7%
July 31-August 3, 2010	12%	63%	2%	10%	15%	20%	43%	11%
July 24-27, 2010	13%	59%	2%	11%	17%	21%	38%	10%
July 17-20, 2010	15%	59%	3%	12%	17%	20%	39%	9%
July 10-13, 2010	12%	65%	2%	10%	14%	27%	38%	9%
July 3-6, 2010	13%	65%	2%	11%	15%	23%	42%	8%
One Year Ago	16%	58%	2%	14%	18%	22%	36%	7%

Registered Voters

	<b>Total Approve</b>	<b>Total Disapprove</b>	Strongly Approve	Somewhat Approve	Neutral	Somewhat Disapprove	Strongly Disapprove	Not Sure
September 4-7, 2010	15%	72%	2%	13%	8%	24%	48%	5%
August 28-31, 2010	14%	74%	2%	12%	10%	23%	51%	3%
August 21-24, 2010	11%	74%	2%	9%	11%	22%	52%	4%
August 14-17, 2010	11%	74%	2%	9%	12%	23%	51%	3%
August 7-10, 2010	13%	69%	1%	12%	14%	19%	50%	4%
July 31-August 3, 2010	11%	71%	1%	10%	11%	20%	51%	6%
July 24-27, 2010	14%	66%	2%	12%	15%	20%	46%	5%
July 17-20, 2010	16%	66%	3%	13%	14%	21%	45%	4%
July 10-13, 2010	11%	73%	2%	9%	10%	28%	45%	5%
July 3-6, 2010	13%	71%	2%	11%	12%	23%	48%	4%
One Year Ago	16%	64%	2%	14%	16%	23%	41%	3%

### Congress Approval

"Do you approve of the way the  
U.S. Congress is handling its job?"

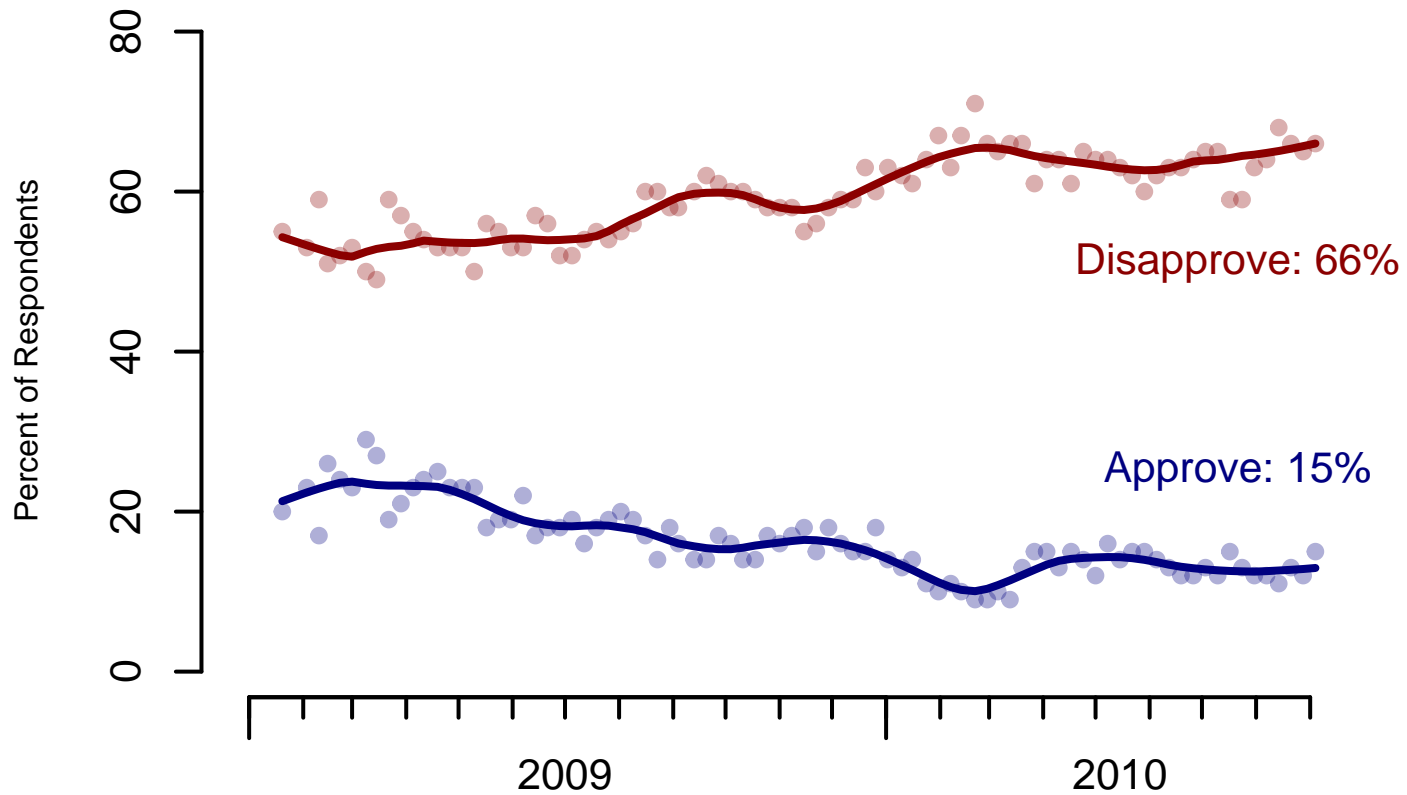


Figure 3: Congress Approval – All Adults



### Congress Approval

"Do you approve of the way the U.S. Congress is handling its job?"

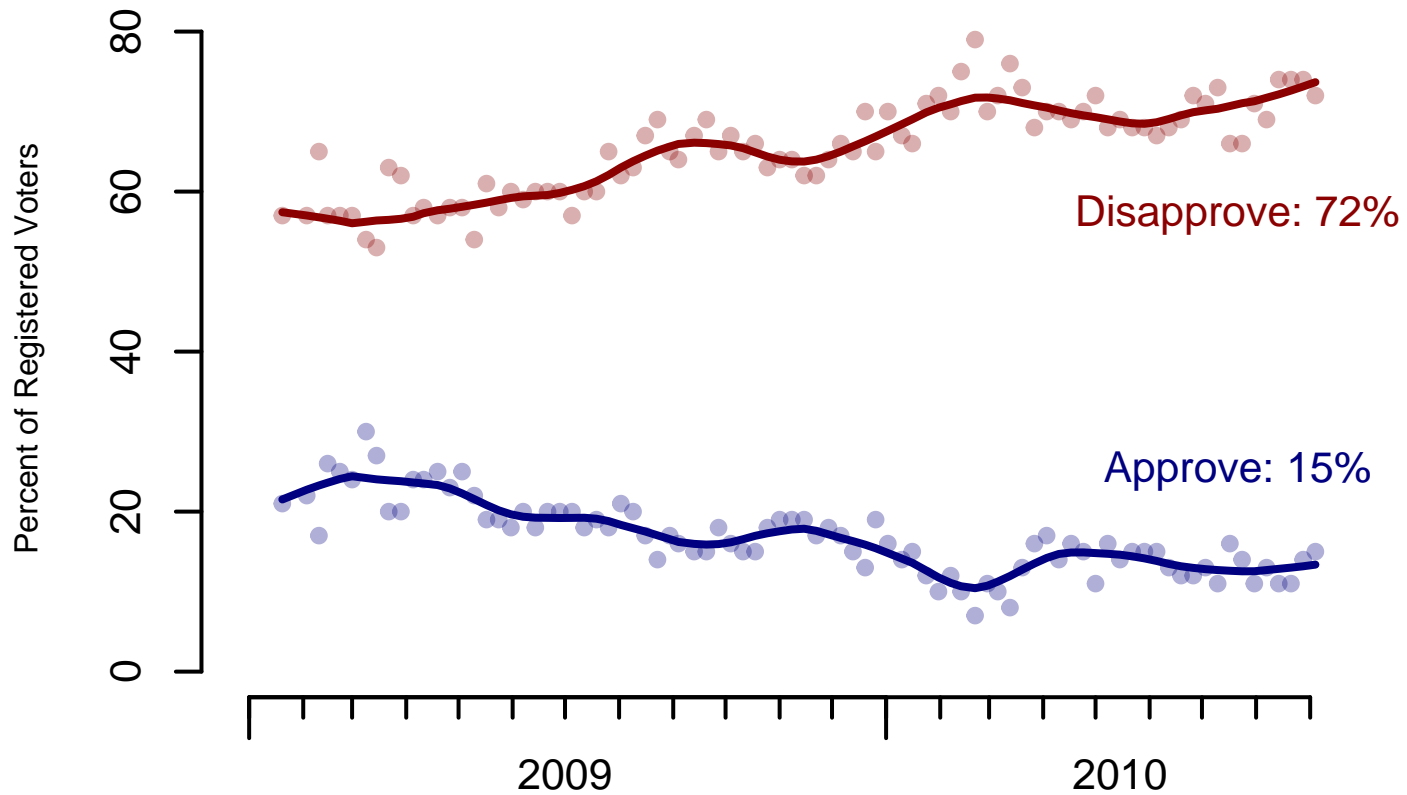


Figure 4: Congress Approval – Registered Voters

**4. Approval of U.S. Congress – This Week**

Overall, do you approve or disapprove of the way that the United States Congress is handling its job?

	Total	Age			Race			Gender		Education		
		18-29	30-64	65+	White	Black	Hispanic	Male	Female	HS or Less	Some College	College Grad
Strongly approve	1.6%	1.5%	1.8%	1.1%	1.4%	2.1%	2.8%	1.6%	1.6%	2.4%	0.8%	1.2%
Somewhat approve	12.8%	16.5%	12.4%	8.5%	10.7%	27.1%	13.9%	12.0%	13.5%	10.1%	13.6%	16.2%
Neither approve nor disapprove	10.4%	12.0%	10.9%	6.4%	8.3%	20.9%	17.1%	6.9%	13.7%	12.3%	10.9%	6.7%
Somewhat disapprove	22.4%	24.5%	22.6%	18.6%	22.0%	30.3%	15.7%	20.1%	24.5%	19.8%	24.2%	24.5%
Strongly disapprove	43.9%	28.7%	45.3%	61.4%	48.9%	11.8%	38.2%	53.7%	34.7%	40.8%	44.5%	48.3%
Not sure	9.0%	16.7%	7.0%	4.0%	8.8%	7.8%	12.3%	5.7%	12.0%	14.6%	6.0%	3.2%
Totals (Unweighted)	100.0% (994)	100.0% (215)	100.0% (647)	100.0% (132)	100.0% (726)	100.0% (103)	100.0% (165)	100.0% (476)	100.0% (518)	100.0% (398)	100.0% (347)	100.0% (249)

	Total	Party ID			Ideology			Region				Family Income		
		Dem	Rep	Ind	Lib	Mod	Con	Northeast	Midwest	South	West	Under 40	40-100	100+
Strongly approve	1.6%	2.7%	1.5%	0.9%	1.6%	2.0%	2.0%	1.1%	1.7%	1.5%	2.2%	3.0%	1.0%	0.6%
Somewhat approve	12.8%	25.9%	4.9%	7.0%	24.4%	18.2%	4.5%	12.9%	11.5%	13.3%	13.1%	9.4%	15.8%	19.3%
Neither approve nor disapprove	10.4%	17.0%	2.2%	5.5%	13.0%	11.6%	2.1%	15.7%	8.7%	8.2%	11.0%	14.6%	8.1%	3.7%
Somewhat disapprove	22.4%	28.7%	17.8%	23.9%	31.8%	28.6%	12.7%	18.8%	20.8%	24.7%	23.3%	24.0%	25.9%	18.5%
Strongly disapprove	43.9%	17.2%	70.2%	56.8%	23.5%	33.8%	76.5%	40.3%	47.9%	44.2%	42.4%	37.4%	43.3%	54.2%
Not sure	9.0%	8.5%	3.5%	5.9%	5.7%	5.8%	2.1%	11.2%	9.4%	8.1%	8.0%	11.6%	6.0%	3.7%
Totals (Unweighted)	100.0% (994)	100.0% (367)	100.0% (252)	100.0% (280)	100.0% (217)	100.0% (339)	100.0% (329)	100.0% (188)	100.0% (216)	100.0% (362)	100.0% (228)	100.0% (362)	100.0% (368)	100.0% (151)

	Voter Registration			2008 Vote			Obama Approval		2010 Congressional Vote	
	Total	Registered	Not registered	Obama	McCain	Other	Approve	Disapprove	Dem/Lean Dem	Rep/Lean Rep
Strongly approve	1.6%	1.7%	1.2%	2.7%	0.6%	0.0%	3.1%	0.5%	2.5%	1.2%
Somewhat approve	12.8%	12.7%	12.9%	23.1%	1.3%	0.0%	26.9%	1.6%	24.2%	3.8%
Neither approve nor disapprove	10.4%	8.3%	15.3%	12.5%	2.6%	10.5%	15.0%	4.5%	15.8%	2.8%
Somewhat disapprove	22.4%	23.7%	19.2%	30.9%	12.9%	20.6%	29.9%	18.4%	28.8%	15.8%
Strongly disapprove	43.9%	48.1%	33.8%	25.4%	80.0%	65.9%	18.5%	71.3%	21.0%	73.7%
Not sure	9.0%	5.3%	17.5%	5.4%	2.6%	3.0%	6.6%	3.7%	7.7%	2.7%
Totals (Unweighted)	100.0% (994)	100.0% (725)	100.0% (269)	100.0% (425)	100.0% (326)	100.0% (37)	100.0% (446)	100.0% (498)	100.0% (456)	100.0% (404)

**5. 2010 Congressional vote – Historical**

If the 2010 elections for U.S. Congress were being held today, who would you vote for in the district where you live?

All Adults

	<b>Total Republican</b>	<b>Total Democrat</b>	Republican	Lean Republican	Lean Democrat	Democrat	Not Sure
September 4-7, 2010	39%	44%	35%	4%	8%	36%	16%
August 28-31, 2010	37%	43%	33%	4%	7%	36%	20%
August 21-24, 2010	39%	43%	35%	4%	7%	36%	17%
August 14-17, 2010	39%	44%	34%	5%	6%	38%	17%
August 7-10, 2010	36%	46%	33%	3%	6%	40%	18%
July 31-August 3, 2010	36%	46%	29%	7%	7%	39%	18%
July 24-27, 2010	39%	43%	35%	4%	6%	37%	18%
July 17-20, 2010	40%	43%	35%	5%	6%	37%	16%
July 10-13, 2010	39%	44%	34%	5%	6%	38%	17%
July 3-6, 2010	39%	45%	34%	5%	7%	38%	15%
One Year Ago	37%	45%	31%	6%	8%	37%	18%

Registered Voters

	<b>Total Republican</b>	<b>Total Democrat</b>	Republican	Lean Republican	Lean Democrat	Democrat	Not Sure
September 4-7, 2010	44%	47%	40%	4%	7%	40%	9%
August 28-31, 2010	44%	45%	40%	4%	5%	40%	11%
August 21-24, 2010	47%	44%	43%	4%	5%	39%	9%
August 14-17, 2010	45%	45%	40%	5%	5%	40%	11%
August 7-10, 2010	42%	48%	38%	4%	4%	44%	9%
July 31-August 3, 2010	41%	48%	35%	6%	6%	42%	11%
July 24-27, 2010	43%	46%	39%	4%	6%	40%	10%
July 17-20, 2010	44%	48%	40%	4%	6%	42%	9%
July 10-13, 2010	42%	46%	38%	4%	6%	40%	12%
July 3-6, 2010	43%	47%	39%	4%	5%	42%	9%
One Year Ago	43%	47%	36%	7%	7%	40%	11%

## 2010 Generic Congressional Ballot

"If the 2010 elections for U.S. Congress were being held today, who would you vote for in the district where you live?"

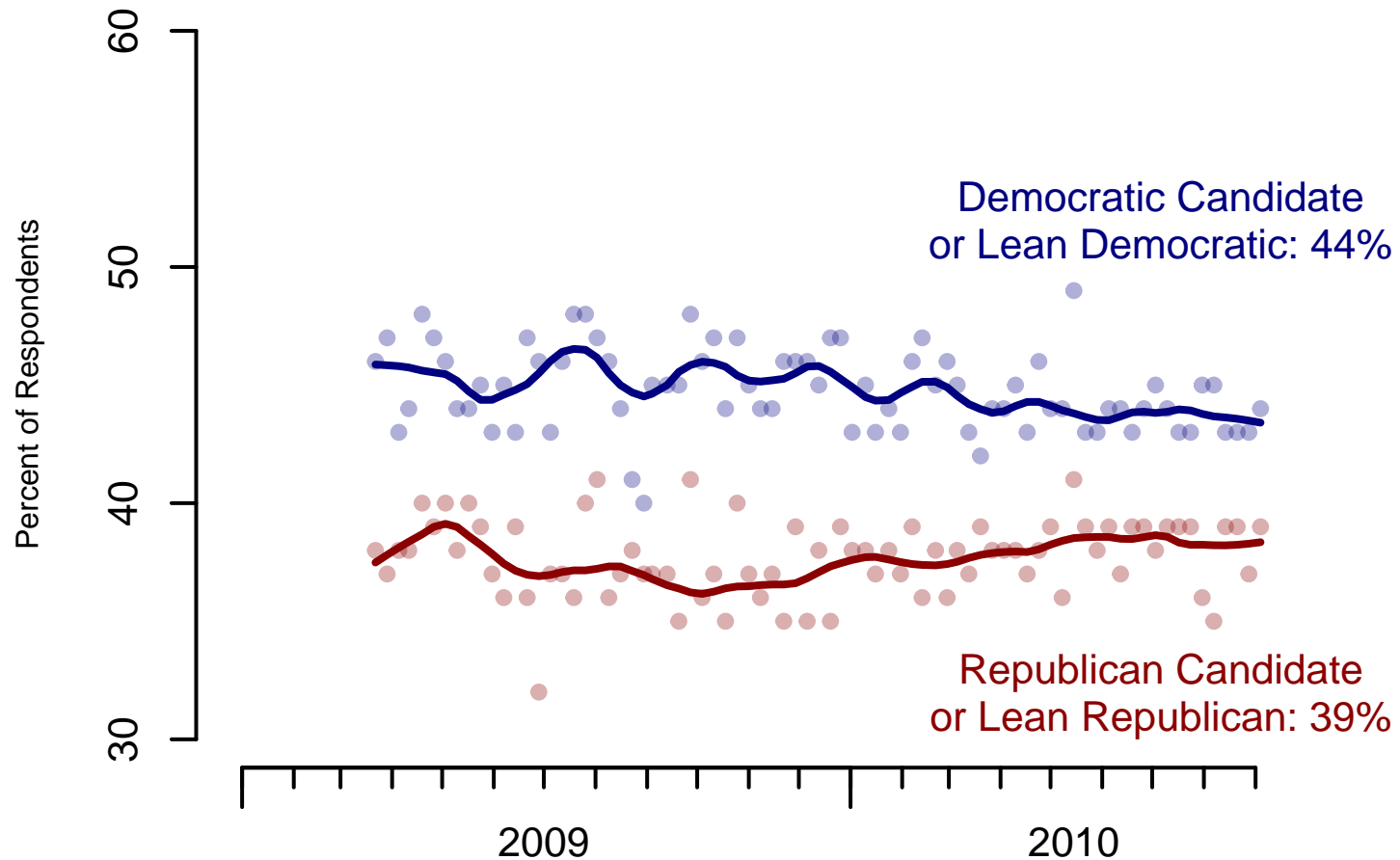


Figure 5: 2010 Congressional Vote – All Adults

## 2010 Generic Congressional Ballot

"If the 2010 elections for U.S. Congress were being held today, who would you vote for in the district where you live?"

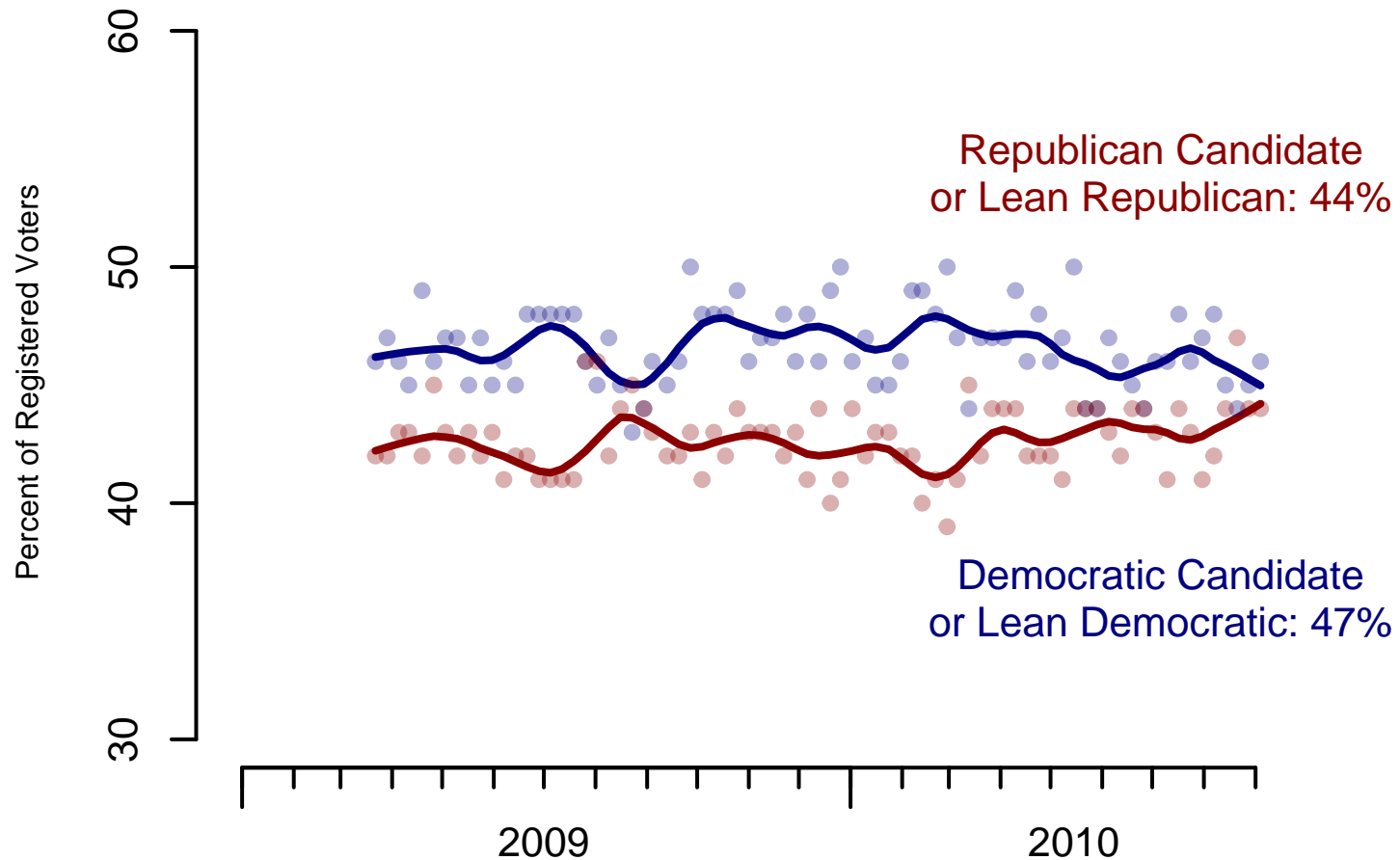


Figure 6: 2010 Congressional Vote – Registered Voters

**6. 2010 Congressional vote – This Week**

If the 2010 elections for U.S. Congress were being held today, who would you vote for in the district where you live?

	Total	Age			Race			Gender		Education		
		18-29	30-64	65+	White	Black	Hispanic	Male	Female	HS or Less	Some College	College Grad
Republican	35.3%	26.1%	36.2%	45.6%	38.8%	7.0%	38.2%	41.0%	29.8%	34.3%	37.8%	34.0%
Lean Republican	3.9%	5.7%	3.3%	3.2%	4.6%	0.0%	1.4%	5.3%	2.5%	3.2%	4.0%	4.7%
Lean Democrat	8.1%	8.4%	7.9%	8.5%	7.7%	10.8%	8.9%	5.8%	10.3%	7.5%	6.6%	10.8%
Democrat	36.4%	39.9%	37.1%	28.7%	30.8%	71.7%	43.2%	32.9%	39.6%	29.7%	40.9%	42.1%
Not Sure	16.4%	19.8%	15.5%	14.0%	18.0%	10.4%	8.2%	14.9%	17.7%	25.3%	10.7%	8.5%
Totals (Unweighted)	100.0% (994)	100.0% (215)	100.0% (647)	100.0% (132)	100.0% (725)	100.0% (103)	100.0% (166)	100.0% (478)	100.0% (516)	100.0% (396)	100.0% (347)	100.0% (251)

	Total	Party ID			Ideology			Region				Family Income		
		Dem	Rep	Ind	Lib	Mod	Con	Northeast	Midwest	South	West	Under 40	40-100	100+
Republican	35.3%	3.7%	89.2%	33.3%	2.5%	23.2%	83.1%	33.5%	30.7%	38.1%	36.7%	27.8%	36.4%	47.2%
Lean Republican	3.9%	1.0%	3.4%	6.1%	0.4%	5.7%	4.0%	3.7%	5.9%	3.1%	3.2%	4.0%	4.4%	5.4%
Lean Democrat	8.1%	12.6%	1.4%	9.6%	10.5%	11.5%	1.1%	8.7%	9.4%	8.6%	5.6%	10.3%	8.1%	3.7%
Democrat	36.4%	78.7%	4.6%	25.6%	83.6%	45.9%	7.7%	31.8%	40.1%	33.4%	41.9%	33.8%	40.2%	38.0%
Not Sure	16.4%	4.0%	1.6%	25.4%	3.1%	13.8%	4.0%	22.4%	14.0%	16.8%	12.6%	24.1%	11.0%	5.6%
Totals (Unweighted)	100.0% (994)	100.0% (366)	100.0% (253)	100.0% (281)	100.0% (217)	100.0% (339)	100.0% (330)	100.0% (187)	100.0% (215)	100.0% (363)	100.0% (229)	100.0% (360)	100.0% (370)	100.0% (152)

	Total	Voter Registration		2008 Vote			Obama Approval		2010 Congressional Vote	
		Registered	Not registered	Obama	McCain	Other	Approve	Disapprove	Dem/Lean Dem	Rep/Lean Rep
Republican	35.3%	40.1%	23.8%	4.3%	85.9%	58.8%	4.5%	67.3%	0.0%	90.1%
Lean Republican	3.9%	3.8%	4.0%	2.6%	4.5%	5.5%	2.0%	5.4%	0.0%	9.9%
Lean Democrat	8.1%	7.3%	10.1%	12.1%	0.8%	9.5%	11.8%	3.4%	18.2%	0.0%
Democrat	36.4%	39.4%	29.3%	71.1%	4.4%	9.1%	72.2%	8.9%	81.8%	0.0%
Not Sure	16.4%	9.4%	32.8%	10.0%	4.5%	17.2%	9.5%	14.9%	0.0%	0.0%
Totals (Unweighted)	100.0%	100.0%	100.0%	100.0%	100.0%	100.0%	100.0%	100.0%	100.0%	100.0%

continued on the next page . . .

continued from previous page

Total	Voter Registration		2008 Vote			Obama Approval		2010 Congressional Vote	
	Registered	Not registered	Obama	McCain	Other	Approve	Disapprove	Dem/Lean Dem	Rep/Lean Rep
(994)	(725)	(269)	(425)	(327)	(37)	(447)	(499)	(458)	(406)



**7. Direction of country – Historical**

Would you say things in this country today are...

	All Adults		
	Right Track	Wrong Direction	Not Sure
September 4-7, 2010	33%	54%	13%
August 28-31, 2010	28%	57%	15%
August 21-24, 2010	29%	58%	13%
August 14-17, 2010	28%	61%	12%
August 7-10, 2010	30%	56%	14%
July 31-August 3, 2010	29%	56%	15%
July 24-27, 2010	32%	52%	16%
July 17-20, 2010	32%	52%	16%
July 10-13, 2010	29%	56%	15%
July 3-6, 2010	27%	61%	12%
One Year Ago	35%	51%	14%

	Registered Voters		
	Right Track	Wrong Direction	Not Sure
September 4-7, 2010	35%	56%	9%
August 28-31, 2010	28%	59%	12%
August 21-24, 2010	30%	60%	10%
August 14-17, 2010	28%	62%	9%
August 7-10, 2010	33%	57%	10%
July 31-August 3, 2010	31%	58%	11%
July 24-27, 2010	35%	54%	11%
July 17-20, 2010	36%	53%	11%
July 10-13, 2010	29%	58%	13%
July 3-6, 2010	29%	62%	9%
One Year Ago	37%	51%	12%

## Direction of Country

"Would you say things in this country today are generally headed in the right direction or off on the wrong track?"

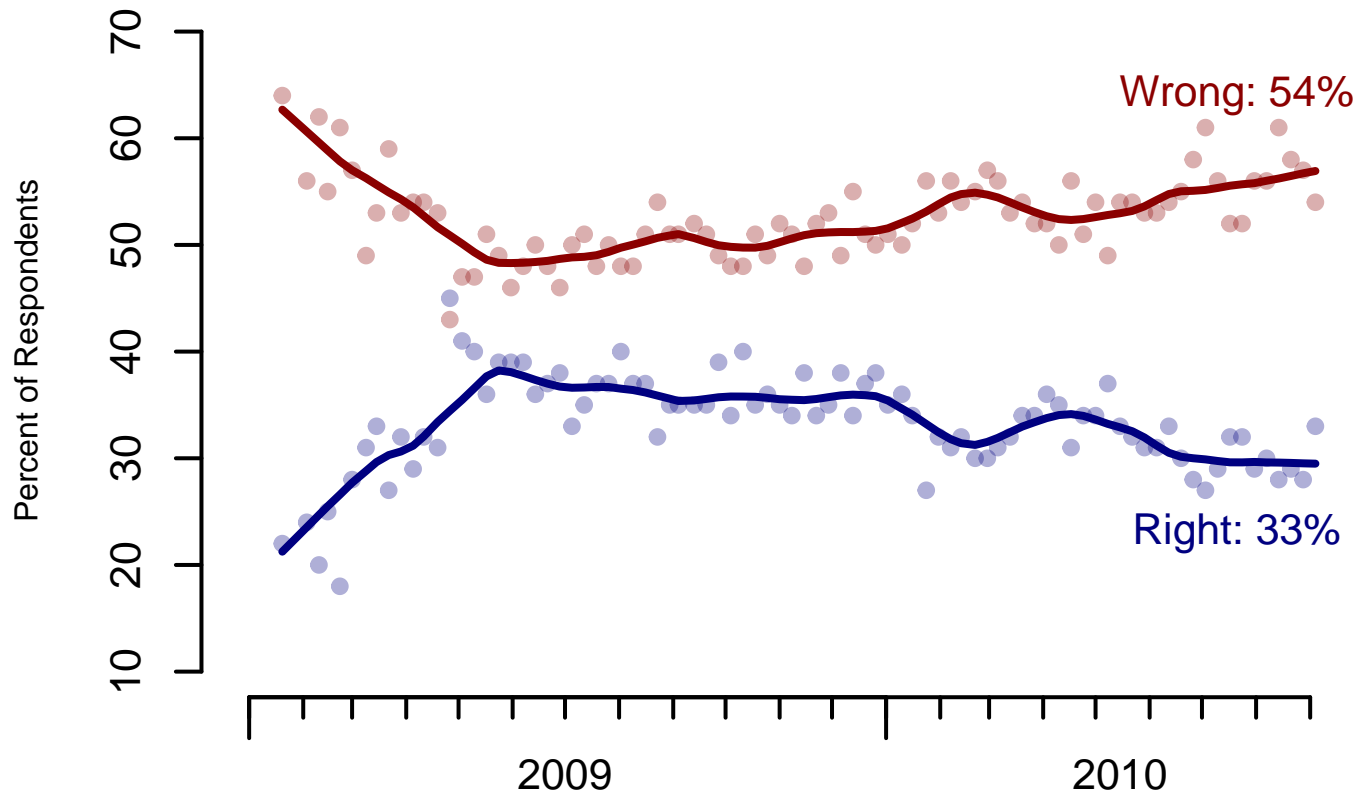


Figure 7: Direction of Country – All Adults

## Direction of Country

"Would you say things in this country today are generally headed in the right direction or off on the wrong track?"

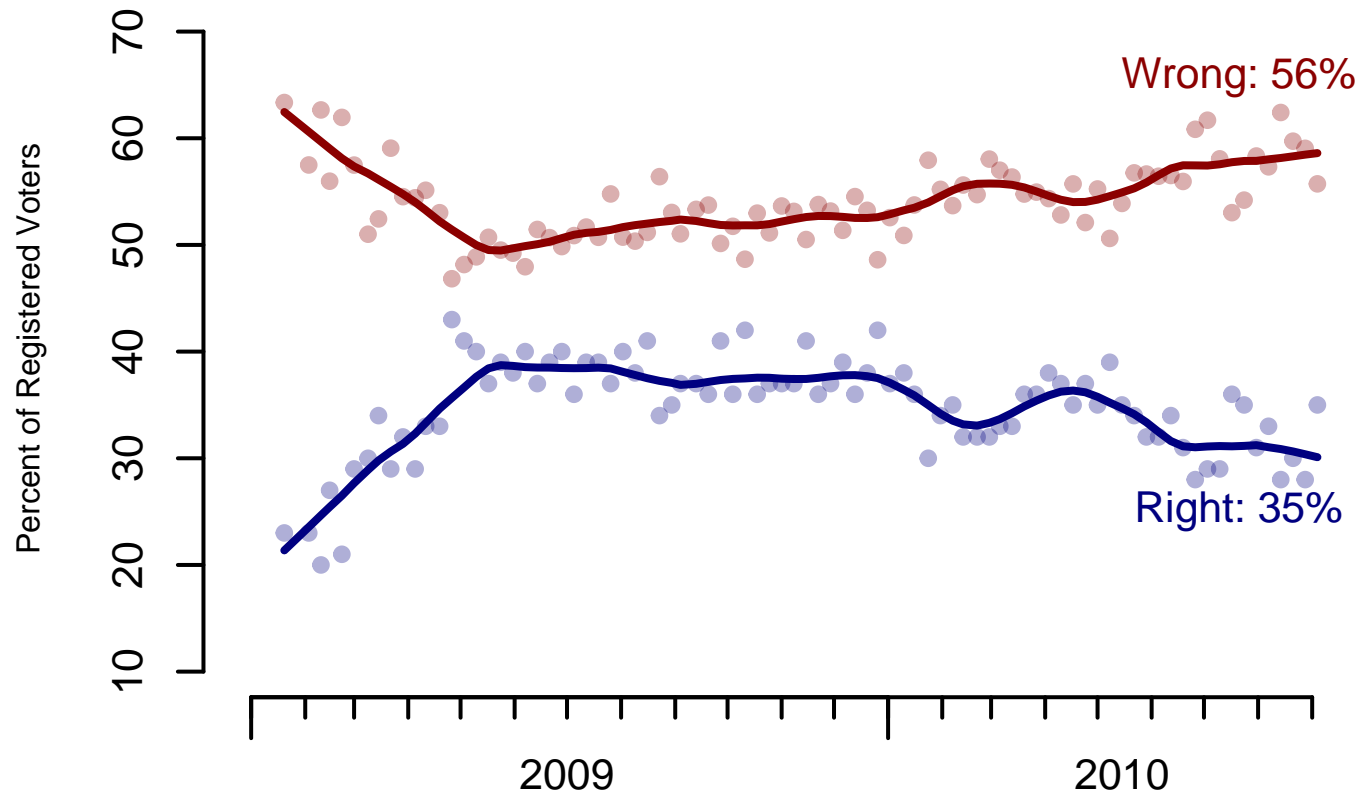


Figure 8: Direction of Country – Registered Voters

**8. Direction of Country – This Week**

Would you say things in this country today are...

	Total	Age			Race			Gender		Education		
		18-29	30-64	65+	White	Black	Hispanic	Male	Female	HS or Less	Some College	College Grad
Generally headed in the right direction	33.0%	37.6%	33.0%	26.5%	28.0%	69.4%	32.7%	30.0%	35.8%	25.8%	36.0%	41.2%
Off on the wrong track	54.2%	43.2%	54.8%	67.7%	60.5%	11.4%	50.2%	60.1%	48.7%	58.2%	54.1%	47.8%
Not sure	12.8%	19.2%	12.2%	5.8%	11.5%	19.2%	17.1%	9.9%	15.5%	16.0%	9.9%	11.0%
Totals (Unweighted)	100.0% (990)	100.0% (209)	100.0% (648)	100.0% (133)	100.0% (720)	100.0% (102)	100.0% (168)	100.0% (474)	100.0% (516)	100.0% (394)	100.0% (346)	100.0% (250)

	Total	Party ID			Ideology			Region				Family Income		
		Dem	Rep	Ind	Lib	Mod	Con	Northeast	Midwest	South	West	Under 40	40-100	100+
Generally headed in the right direction	33.0%	64.6%	6.0%	25.1%	65.7%	42.3%	8.4%	27.9%	32.2%	32.4%	39.5%	34.4%	35.4%	31.6%
Off on the wrong track	54.2%	24.2%	90.3%	60.3%	21.3%	44.5%	88.4%	53.4%	55.1%	58.3%	47.1%	50.6%	54.7%	56.0%
Not sure	12.8%	11.2%	3.6%	14.5%	13.0%	13.2%	3.2%	18.7%	12.6%	9.4%	13.4%	15.0%	9.9%	12.5%
Totals (Unweighted)	100.0% (990)	100.0% (365)	100.0% (253)	100.0% (279)	100.0% (217)	100.0% (336)	100.0% (331)	100.0% (186)	100.0% (213)	100.0% (361)	100.0% (230)	100.0% (359)	100.0% (368)	100.0% (151)

	Total	Voter Registration		2008 Vote			Obama Approval		2010 Congressional Vote	
		Registered	Not registered	Obama	McCain	Other	Approve	Disapprove	Dem/Lean Dem	Rep/Lean Rep
Generally headed in the right direction	33.0%	35.3%	27.5%	60.9%	2.0%	17.4%	69.5%	4.4%	62.2%	6.9%
Off on the wrong track	54.2%	55.7%	50.5%	24.4%	94.6%	75.8%	16.9%	91.2%	23.8%	89.3%

continued on the next page ...

continued from previous page

	<b>Voter Registration</b>			<b>2008 Vote</b>			<b>Obama Approval</b>		<b>2010 Congressional Vote</b>	
	Total	Registered	Not registered	Obama	McCain	Other	Approve	Disapprove	Dem/Lean Dem	Rep/Lean Rep
Not sure	12.8%	9.0%	22.0%	14.7%	3.4%	6.8%	13.7%	4.4%	13.9%	3.9%
Totals (Unweighted)	100.0% (990)	100.0% (724)	100.0% (266)	100.0% (425)	100.0% (328)	100.0% (36)	100.0% (444)	100.0% (498)	100.0% (454)	100.0% (405)

**The Economist/YouGov Poll**  
September 4-7, 2010



<b>Sponsorship</b>	<i>The Economist</i>
<b>Fieldwork</b>	YouGov
<b>Interviewing Dates</b>	September 4-7, 2010
<b>Target population</b>	U.S. citizens, aged 18 and over.
<b>Sampling method</b>	Respondents were selected from YouGov's PollingPoint panel using sample matching. A random sample (stratified by age, gender, race, education, and region) was selected from the 2005–2007 American Community Study. Voter registration, turnout, religion, news interest, minor party identification, and non-placement on an ideology scale, were imputed from the 2008 Current Population Survey Registration and Voting Supplement and the Pew Religion in American Life Survey. Matching respondents were selected from the PollingPoint panel, an opt-in Internet panel.
<b>Weighting</b>	The sample was weighted using propensity scores based on age, gender, race, education, news interest, voter registration, and non-placement on an ideology scale. The weights range from 0.39 to 3.01, with a mean of one and a standard deviation of 0.5.
<b>Number of respondents</b>	1,000
<b>Margin of error</b>	± 3.5% (adjusted for weighting)
<b>Survey mode</b>	Web-based interviews
<b>Full results</b>	Available online at <a href="http://www.economist.com/democracyinamerica">http://www.economist.com/democracyinamerica</a> .